

ISIS inSIGHT™ INSTALLATION INSTRUCTIONS

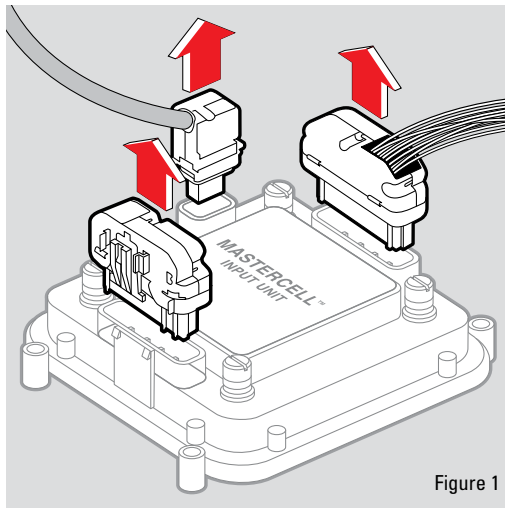


Figure 1

STEP 1

DISCONNECTING MASTERCELL™ UNIT

Unplug all connections to the MASTERCELL™ input unit as shown in the diagram to the left.

Remove the input unit from your vehicle and proceed to step 2.

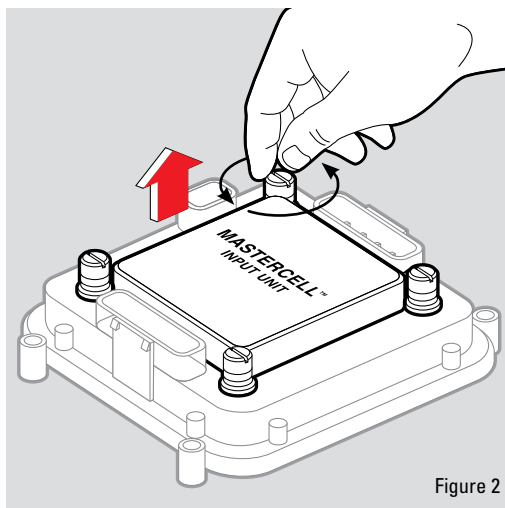


Figure 2

STEP 2

CLEAR COVER REMOVAL

Remove the clear cover of the MASTERCELL™ input unit by using your fingers and thumb, turning the screws in a counter clockwise motion. Lift off the clear cover once all screws are removed.

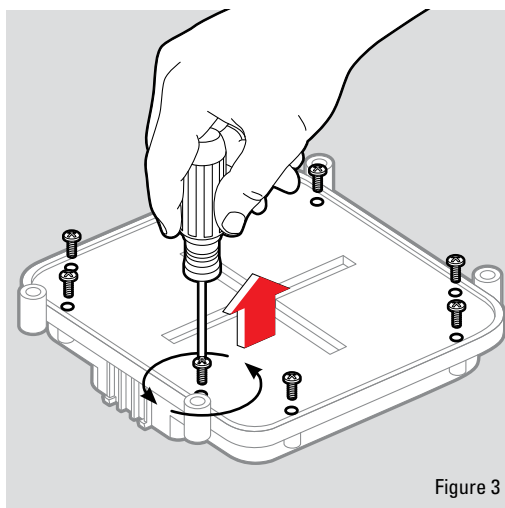


Figure 3

STEP 3

SCREW REMOVAL

Turn over the MASTERCELL™ unit and remove the screws from the back of the input unit using a phillips screwdriver. There are two screws on each side of the box for a total of eight.

ISIS inSIGHT™ INSTALLATION INSTRUCTIONS

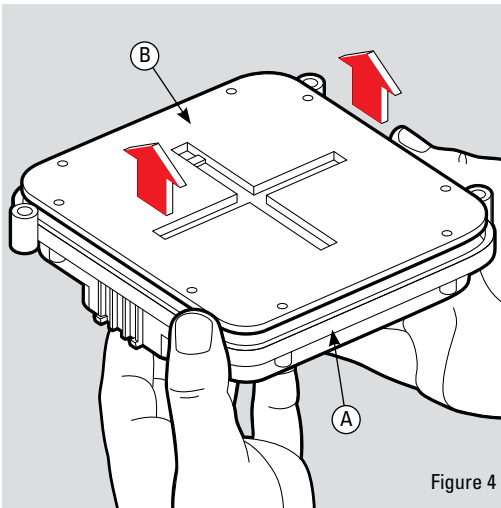


Figure 4

STEP 4

BACK COVER REMOVAL

Once the screws are removed, carefully separate the plastic casing (A) from the back cover (B) as described below.

Carefully separate the front and back cover of the MASTERCELL™ unit by first turning the unit upside down and gently placing your fingers in the input connector terminals. Gently press up on the connector pins while holding the plastic casing (A) with your thumbs until the back cover is separated from the casing. Be sure to keep the plastic casing upside down to keep the buttons in place. If they do fall out, locate all five buttons and put them to the side.

Set aside the plastic casing (keeping upside-down).

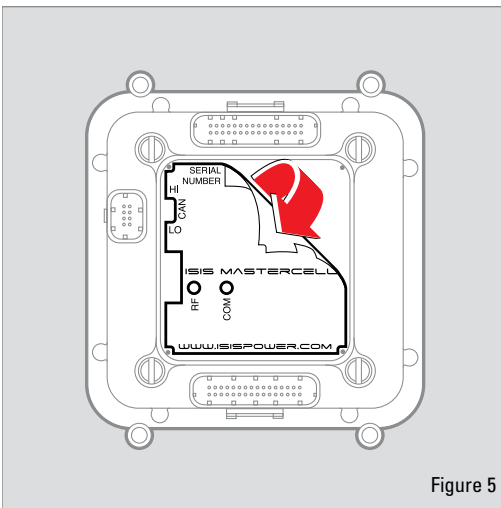


Figure 5

STEP 5

LABEL REMOVAL

Peel label from the front cover of the MASTERCELL™ input unit as cleanly as possible.

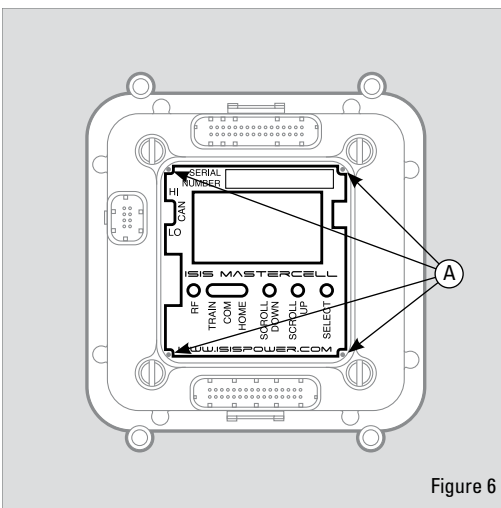


Figure 6

STEP 6

NEW LABEL INSERTION

Place the new label onto the MASTERCELL™ input unit using the posts (A) located in each corner of the label area as guides.

ISIS inSIGHT™ INSTALLATION INSTRUCTIONS

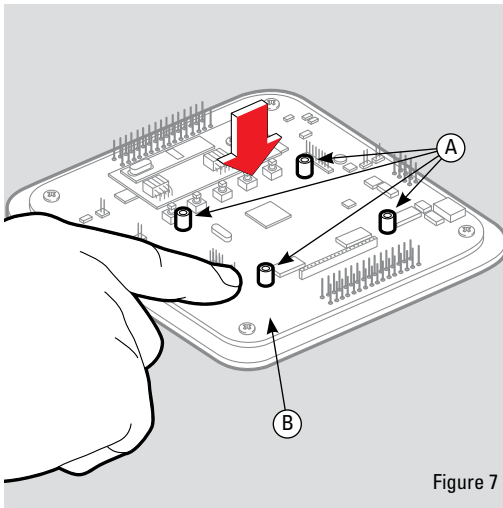


Figure 7

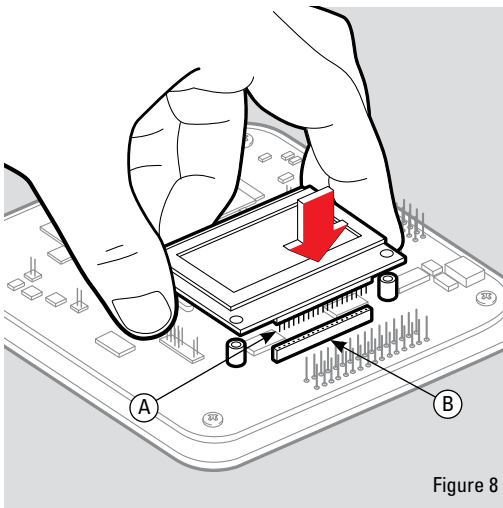


Figure 8

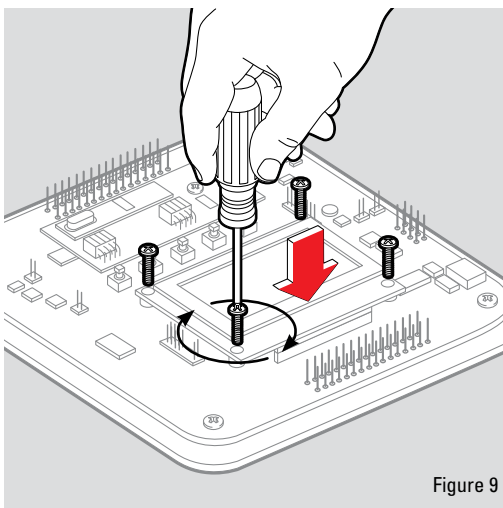


Figure 9

STEP 7

CLEAR SPACER PLACEMENT

Place the four clear spacers (A) on the board (B) as shown in figure 7 to the left.

STEP 8

InSIGHT™ MODULE BOARD INSTALLATION

Align pins on the inSIGHT™ board (A) with the connector header located on the MASTERCELL™ board labeled LCD Module (B). Insert the pins into the header and push in until the connectors are flush.

Ensure that the spacers are still aligned with the holes prior to securing the diagnostic board with screws. If the spacers are not aligned, CAREFULLY put them back in place using a small tool.

STEP 9

BOARD FASTENING

Fasten the inSIGHT™ module board to the MASTERCELL™ board by inserting the four 4-40 x 9/16 screws into the holes on the inSIGHT™ board as shown in figure 9 to the left.



Important: Do not overtighten screws as this will damage printed circuit board (PCB).

Remove clear plastic protector sticker from the LCD screen.

ISIS inSIGHT™ INSTALLATION INSTRUCTIONS

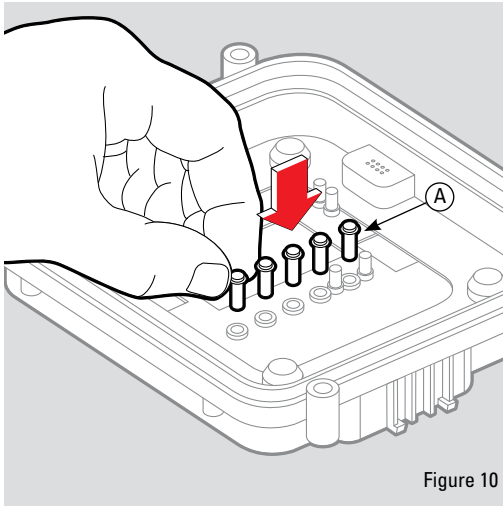


Figure 10

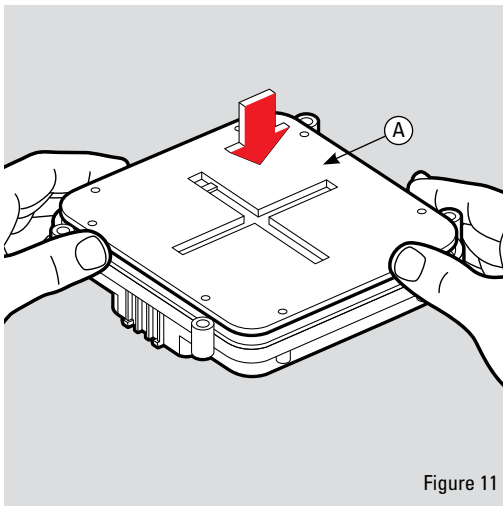


Figure 11

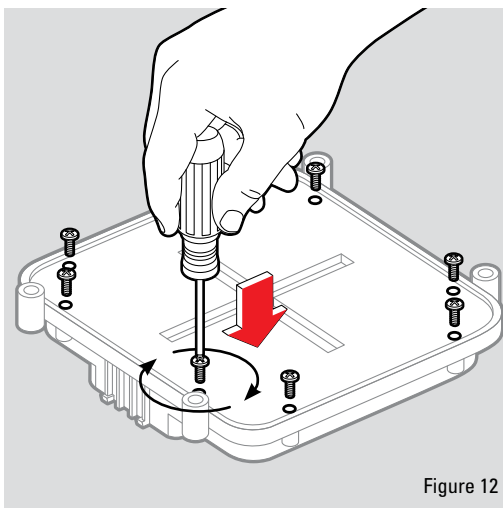


Figure 12

STEP 10

REPLACING BUTTONS

With the front cover upside down, insert the buttons (A) back into the front cover with the clear end of the button facing down as shown in figure 10

Once inserted, the buttons should be resting in the front cover holes with the clear side of the button showing out to the exterior of the MASTERCELL™ input unit.

STEP 11

COVER ASSEMBLY

Keeping front cover upside down, insert the MASTERCELL™ board and back cover (A) as shown in figure 11 by aligning the input pins with the correct holes in the front cover. **DO NOT** flip over the front cover as this will cause the buttons to fall out.

Gently press the cover down until all pins have gone through their corresponding openings on the front cover and the back cover fits snugly in place.

STEP 12

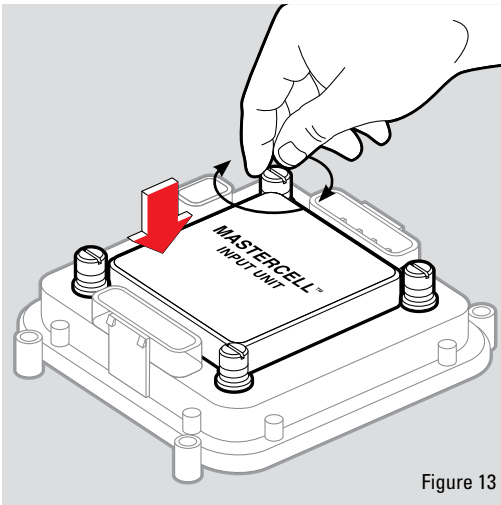
MASTERCELL™ UNIT

Insert screws back into the holes on the back cover and tighten until the cover is securely fastened.



Important: Do not overtighten screws as this will damage the plastic.

ISIS inSIGHT™ INSTALLATION INSTRUCTIONS



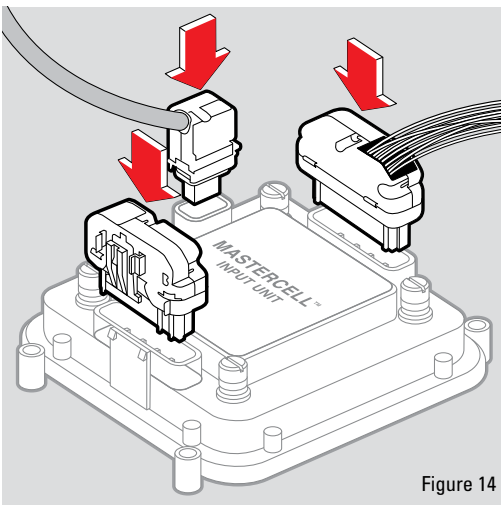
STEP 13

CLEAR COVER INSTALLATION

Place the clear cover for the MASTERCELL™ input unit back into its proper place and secure the cover using your fingers and thumb to tighten the screws.



- Replace cover and hand tighten only.
- Do not use screw driver or mechanical tools.
- Over tightening can cause plastic casing to crack, voiding warranty.



STEP 14

MASTERCELL™ UNIT CONNECTION

Mount MASTERCELL™ input unit back into your vehicle and plug all connectors back into their proper location as shown left in figure 14.